

PULLERS

SLEEVE PULLER TYPE

OTC



MANUAL SLEEVE PULLER

STOCK #	DESCRIPTION
O 1200	REMOVES ENGINE SLEEVES OF MOST MAKES/MODELS EXCEPT MACK

OTC



INSTALLING CONVERSION KIT FOR O 1200

STOCK #	DESCRIPTION
O 1201	ENABLES O 1200 SET TO ALSO INSTALL SLEEVES



OTC

17 1/2 TON HYDRAULIC SLEEVE PULLER SET

STOCK #	DESCRIPTION
O 1202	REMOVES & INSTALLS SLEEVES INCLS HYD PUMP, RAM & HOSE
O 1203	SAME AS ABOVE BUT WITHOUT HYD PUMP, RAM & HOSE



OTC

WET TYPE SLEEVE PULLER

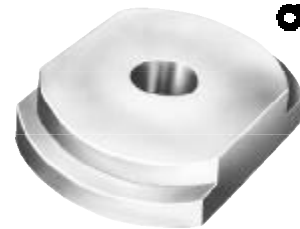
STOCK #	DESCRIPTION
O 1204	FITS SLEEVES 3" - 6 1/2" SLIDE HAMMER ASSY NOT INCLUDED
O 1205	SAME AS ABOVE BUT INCLUDES 5 LB SLIDE HAMMER ASSY



OTC

SLEEVE REMOVER PLATES

STOCK #	FOR BORE SIZE
O 1219	3.600"
O 1221	3 9/16"
O 1222	3 11/16"
O 1223	3 7/8"
O 1225	3 7/8"
O 1227	4"
O 1230	4 1/8"
O 1232	4 1/4"
O 1233	4 5/16"
O 1240	4 3/4"
O 1242	4 7/8"
O 1243	4 7/8"
O 1245	5"
O 1246	5 1/8"
O 1250	5 1/2"



OTC

BLANK SLEEVE REMOVER PLATES

STOCK #	FOR BORE SIZE	WILL MACHINE TO
O 38723	3.437	3.000
O 38722	4.400	3.812
O 39057	4.750	4.400



OTC

SLEEVE INSTALLER PLATES

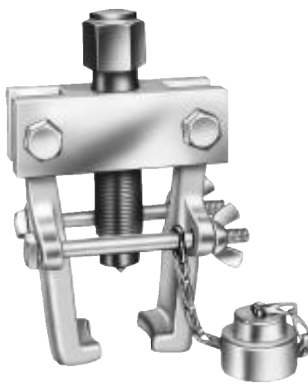
STOCK #	FITS SLEEVE SIZE
O 1252	3 3/16" - 3 7/16"
O 1253	3 9/16" - 3 7/8"
O 1254	4 1/8" - 4 3/8"
O 1256	4 13/16" - 5 3/4"



OTC

PILOT BEARING PULLER

STOCK #	REACH (IN.)	SPREAD (IN.)
O 7318	3/4	1/2 - 1 1/2
O 7319	1	7/8 - 2



OTC

PITMAN ARM PULLER

STOCK #	DESCRIPTION
O 7310A	ADJUSTABLE LOCKING JAWS FOR MEDIUM AND HEAVY TRUCKS. INCLS ADAPTER
O 7311A	ADJUSTABLE LOCKING JAWS FOR LIGHT TRUCKS TO 3/4 TON & PASSENGER CARS



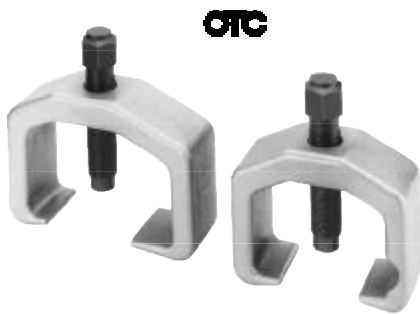
PULLERS

SPECIAL APPLICATION



TIE ROD END & PITMAN ARM PULLER

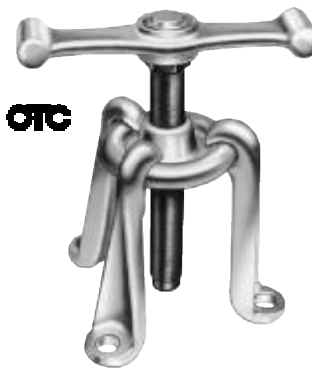
STOCK #	DESCRIPTION
K 194	FOR MOST CARS & LIGHT TRUCKS. SPREAD 1 1/16" REACH 1 3/4"



OTC

SLACK ADJUSTER PULLERS

STOCK #	DESCRIPTION
O 5055	FOR SERVICING ALL MANUAL S-CAM AIR BRAKE SLACK ADJUSTORS
O 5056	FOR ROCKWELL, HALDEX, GUNITE & BENDIX AUTOMATIC ADJUSTERS



OTC

UNIVERSAL HUB PULLER

STOCK #	DESCRIPTION
O 7394	ADJUSTABLE SLIDING ARMS REACH IS 7 1/2" BOLT CIRCLE



OTC

BEARING CUP REMOVER

STOCK #	REACH (IN.)	SPREAD (IN.)	USE
O 7136	3 1/2	5/16 - 3 1/4	USE WITH ANY SLIDE HAMMER WITH 5/8-18 THREAD



OTC

FRONT HUB INSTALLER/PULLER

STOCK #	DESCRIPTION
O 7135A	ON ESCORT/LYNX, TEMPO/TOPAZ & TAURUS/SABLE CARS
O 7208A	5 TON FOR FRONT HUBS ON FWD CARS W/SPARE LOCKNUT FOR REAR AXLE
O 7406	SET INCLS O 7135A & O 7208A

OTC

PITMAN ARM PULLER

STOCK #	USE	JAW TIP SPREAD (IN.)
O 7314A	PITMAN ARMS ON MOST CARS & LIGHT TRUCKS	1 5/16



OTC

PITMAN ARM PULLER

STOCK #	USE
O 6496	FITS MOST DOMESTIC SUV'S & PICKUPS. NEW COMPACT DESIGN ALLOWS EASY ACCESS. LIVE CENTER ON FORCING SCREW & EASY USE OF STANDARD WRENCH.
	1998 - 2002 LINCOLN NAVIGATOR
	1997 - 2002 FORD F-150 and EXPEDITION
	1991 - 2001 OLDS BRADAVA
	1991 - 2001 S10/S15 GM TRUCKS & BLAZERS
	1992 - 2002 SUBURBAN
	1988 - 2002 GM & CHEVY 1/2-, 3/4 & 1 TON
	1992 - 2002 CHEVY TAHOE & GMC YUKON